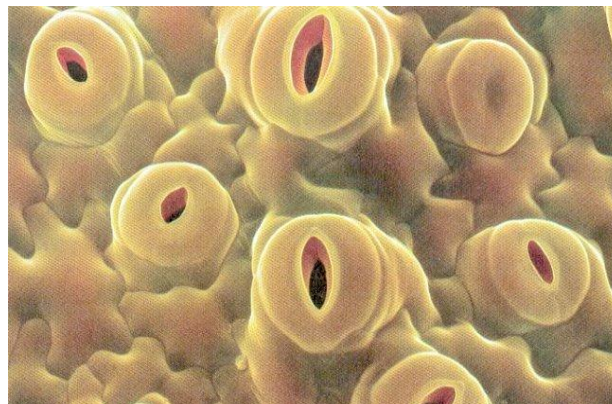


Edouard Davin
Land-Climate interactions group, ETH



- Land surface modeling
- How vegetation influences land-atmosphere exchanges



- Development and evaluation
 - Subroutine coupling with Community Land Model (CLM3.5)
 - OASIS coupling with CLM3.5/CLM4.0
- Applications
 - Effect of climate extremes on the carbon cycle
 - Impact of land cover change
 - Impact of agricultural practices (e.g. no-till farming)
 - Influence of diffuse radiation on photosynthesis and water fluxes
 - Role of phenology vs soil moisture feedbacks during extremes

- Development and evaluation
 - Subroutine coupling with Community Land Model (CLM3.5)
 - OASIS coupling with CLM3.5/CLM4.0
- Applications
 - Effect of climate extremes on the carbon cycle
 - Impact of land cover change
 - Impact of agricultural practices (e.g. no-till farming)
 - Influence of diffuse radiation on photosynthesis and water fluxes
 - Role of phenology vs soil moisture feedbacks during extremes

Coupling frequency

- How to minimize run-time overhead due to the coupling?
- What is the best compromise between reducing MPI communication (decrease coupling frequency) and keeping physical consistency?
- E.g. Radiation scheme run with 1 hour time step...